

Double Bass

The Iron Man Set

32 Bar Strathspey × 8 – 1 2 3 4 1 2 3 4

1. The Iron Man

James Scott Skinner (1842–1927)

Melody A D A Bm E

pizz.

3 3

Detailed description: This system contains the first four measures of the piece. The top staff is in treble clef with a key signature of three sharps (F#, C#, G#) and a 4/4 time signature. It features a melody with eighth and sixteenth notes, including two triplet markings. The bottom staff is in bass clef with the same key signature and time signature, showing a bass line with quarter notes and rests. The word 'pizz.' is written below the first measure of the bass line.

5

Detailed description: This system contains measures 5 through 8. The bass line continues with quarter notes and rests, maintaining the 4/4 rhythm.

9

Detailed description: This system contains measures 9 through 12. The bass line continues with quarter notes and rests.

13

1. 2.

Detailed description: This system contains measures 13 through 16. It features a first ending bracket over measures 15 and 16, with a second ending bracket over measures 17 and 18. The piece concludes with a double bar line and a key signature change to two sharps (F#, C#).

2. MacKenzie Hay

James Scott Skinner (1842–1927)

Detailed description: This system contains the first four measures of the piece. The bass line consists of quarter notes and rests in a 4/4 time signature.

5

Detailed description: This system contains measures 5 through 8. The bass line continues with quarter notes and rests.

9

Detailed description: This system contains measures 9 through 12. The bass line continues with quarter notes and rests.

13

1. 2.

Detailed description: This system contains measures 13 through 16. It features a first ending bracket over measures 15 and 16, with a second ending bracket over measures 17 and 18. The piece concludes with a double bar line and a key signature change to two sharps (F#, C#).

3. Loudon's Bonnie Woods

Duncan MacIntyre



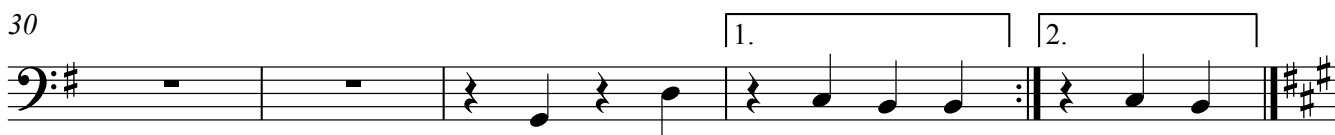
22



26



30



4. Earl Grey

James Hill



5



9



13

